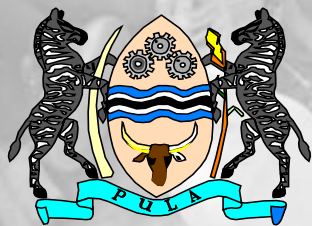




POVERTY - ENVIRONMENT INITIATIVE BOTSWANA

Ruud Jansen

CTA – PEI Botswana
Food and Poverty Policy Coordination Section
Ministry of Finance and Development Planning



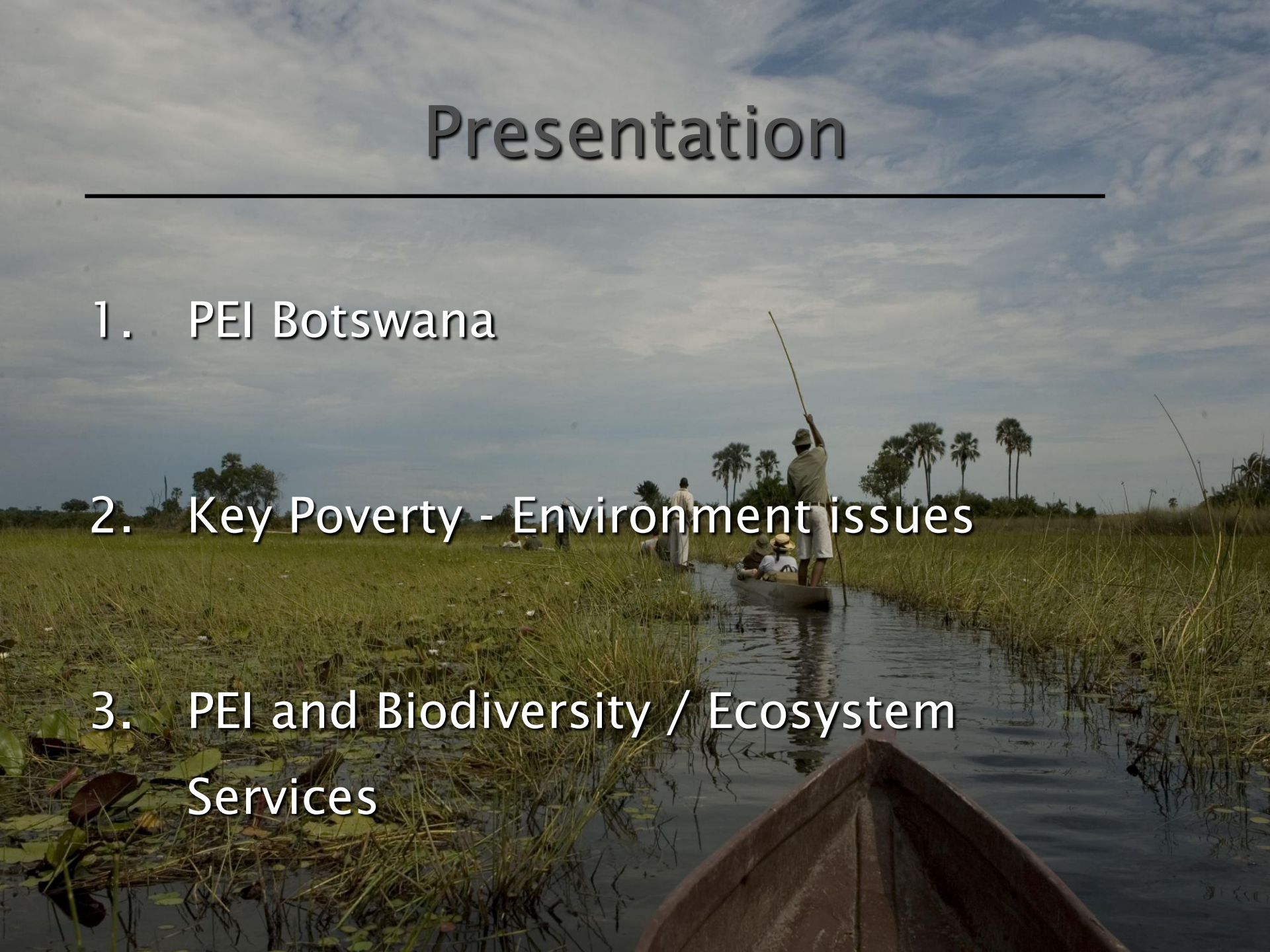
Republic of Botswana

Presentation

1. PEI Botswana

2. Key Poverty - Environment issues

3. PEI and Biodiversity / Ecosystem Services





POVERTY - ENVIRONMENT INITIATIVE BOTSWANA

**Joint UNDP-UNEP programme on mainstreaming of
Poverty - Environment linkages**

**Currently implemented in: Kenya, Uganda, Tanzania,
Rwanda, Mozambique, Mali, Mauritania, Malawi, Burkina
Faso and Botswana**

**PEI Botswana started implementation in 2010 and
current phase will be running till end of 2012**



Natural capital is an essential part of a productive economy and we need to value the goods and services it provides (Defra, Mainstreaming Sustainable Development)

POVERTY - ENVIRONMENT INITIATIVE BOTSWANA

Objective: to mainstream poverty environment issues into development planning

What:

- Making the economic case (economic studies, PER, fiscal reform etc.)
- Influencing policy / strategy + awareness
- Partnering with existing processes (NSSD, NSPR review) incl. research
- Guidance (tools) to mainstreaming PE and sustainable development (SD) issues into the development planning process

POVERTY - ENVIRONMENT INITIATIVE BOTSWANA

Objective: to mainstream poverty environment issues into development planning

How:

- Studies, reviews, assessments, research
- Publications, policy briefs, dialogues
- Capacity building
 - Technical support to Government (methodologies, tools and techniques, concept papers etc)
 - Partnering with civil society, development partners, and private sector

POVERTY - ENVIRONMENT INITIATIVE BOTSWANA

Key PE issues in Botswana include:

- Land and Rangeland Degradation
- Community Based Natural Resource Mgmt
- Climate change and sustainable development
- **Biodiversity conservation, ecosystem services and sustainable utilization**
- Energy and water resources mgmt



Making the value of our natural capital visible to economies and societies creates an evidence base to pave the way for more targeted and cost-effective solutions (TEEB, 2009)

One of four strategic priorities:

To recognise the deep link between ecosystem degradation and the persistence of rural poverty

TEEB for policy makers (2009)





Strategic Goal A:

Address the underlying causes of biodiversity loss by mainstreaming biodiversity across government and society

Aichi Target 2:

By 2020, at the latest, biodiversity values have been integrated into national and local development and poverty reduction strategies and planning processes and are being incorporated into national accounting, as appropriate, and reporting systems.

POVERTY - ENVIRONMENT INITIATIVE BOTSWANA

PEI and Biodiversity:

- Economic studies (agriculture, tourism)
 - Contribution to GDP
 - Cost of degradation / habitat / BD loss
 - CBNRM (CBD/ABS)
- Policy review (NSPR, ISPAAD)
- **Mainstreaming PE and SD linkages into development planning -- tools, indicators**
- **Public Environmental Expenditure Review**



What you can not measure you can not manage!?

POVERTY - ENVIRONMENT INITIATIVE BOTSWANA

PEI and CBD / Aichi:

- Make the value of natural resources, biodiversity and ecosystems visible
- Contextualise the linkages between poverty and environment
 - Sustainable livelihoods / agro-biodiversity
 - Ecosystem goods and services / climate change
 - Employment / green economy / sustainable development
- **Mainstream into policy and development planning**
- **Support implementation of selected activities**

FINALLY, IT
BEGINS TO
DAWN ON HIM...

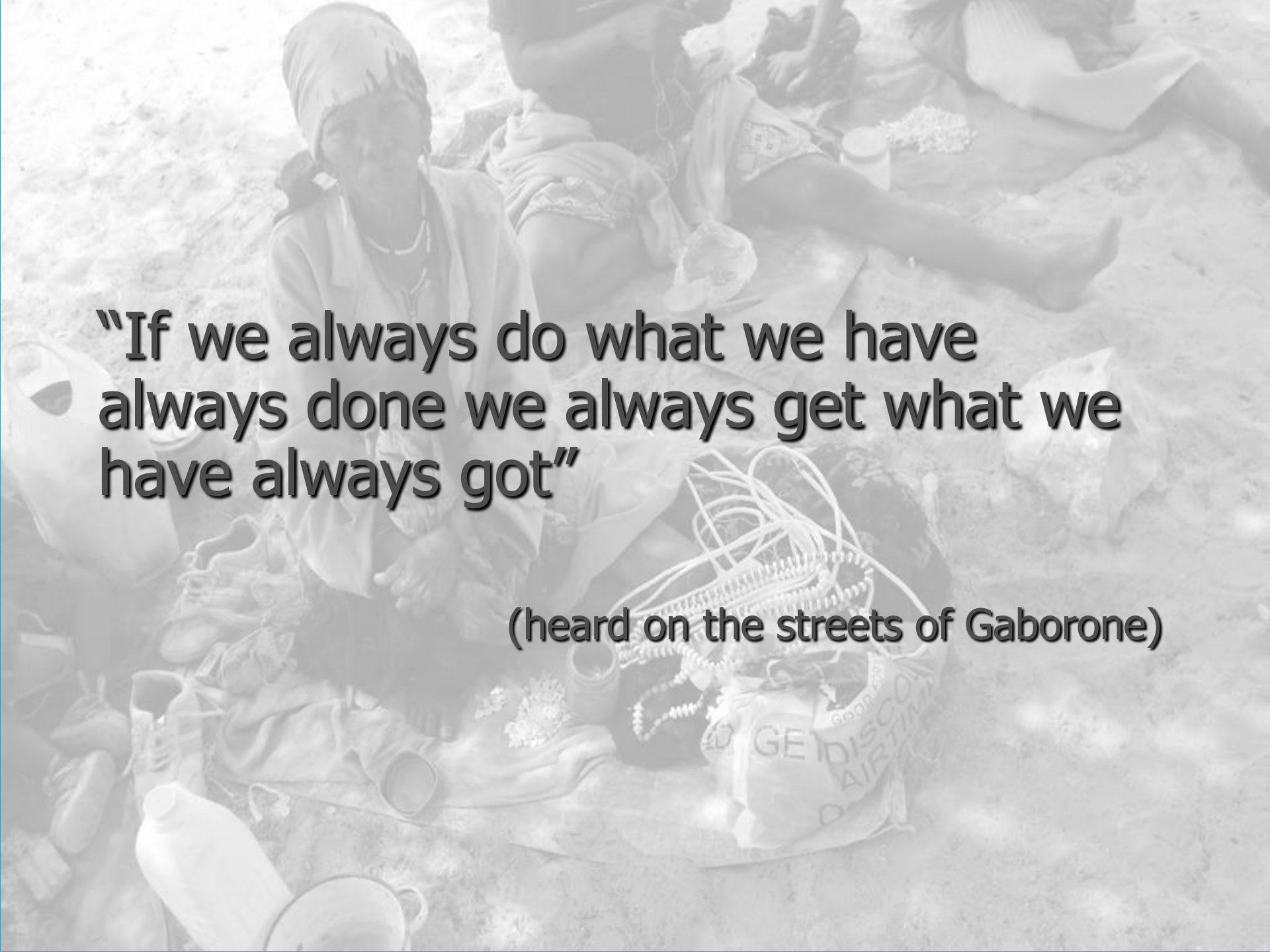
WHAT THE...?
WHERE'D
THE POLAR
ICE CAP
GO?!



© 2007
HARVEY
WILLIAMS
WILLIAMS
WILLIAMS



“By 2050, biodiversity is valued, conserved, restored and wisely used, maintaining ecosystem services, sustaining a healthy planet and delivering benefits essential for all people”



**“If we always do what we have
always done we always get what we
have always got”**

(heard on the streets of Gaborone)



THANK YOU

MERCI

OBRIGADA